

## DEAR VISITOR

In Chile, the main objective of national parks is to protect the natural environments and evolutionary processes that occur inside them, in addition to conserving their cultural and scenic heritage. Therefore, we only authorize activities of education, research or recreation compatible with our conservation objective (Law 18,362).

The regulations detailed below are inspired by the protection of the resources of this park and the precautions you must consider to make your visit a safe one. The climatic conditions of Patagonia are variable and unpredictable, so any carelessness can be fatal.

Help us preserve our natural heritage!

CONAF  
Torres del Paine National Park

## RESTRICTED ACTIVITIES

Conaf allows the realization of low impact recreation activities and with certain rules. Failure to comply with these rules implies **immediate expulsion from the park.**



### Use of fire

The use of any heat source within the park is prohibited by Law 20,653. The offenders will be made available to Carabineros de Chile. Failure to comply with this rule may be punishable by fines of up to \$ 2,000,000 or up to three years in prison.



### Camping

It is allowed exclusively in the authorized areas indicated in this map. It is strictly forbidden to stay overnight in any other place.



### Cook

Allowed only to use stoves that do not use vegetable material as fuel (BioLite type), in the specially enabled areas of each camp or camping area. **In any other place it is prohibited and sanctioned by Law 20,653.**



### Observation of wildlife and photographic safaris

It is only allowed during daylight and within the official trails marked on this map. All activity outside the trails is prohibited, as contact between humans and wildlife causes changes in the behavior of some species, generating risks for both people and animals.



### Cycling

Although it is authorized on vehicular roads, it is not allowed to cycle on the W and Macizo Paine circuits; consult park rangers about authorized routes. For safety, always go accompanied, because there is a risk of puma attack.



### Horseback riding

Only if using the services of companies authorized by CONAF and on the authorized trails indicated in this map.



### Fishing

It is only authorized in the Serrano river and Toro lake, catch-releasing and fulfilling the requirements of Law nr. 20,256 (fishing license, fishing season, type of gear, etc.) Considering that the presence of the Didymo seaweed has already been evidenced in the limits of the Park, it is mandatory to disinfect all the gear and equipment used by the hiker, which must be done in the lodges and in the presence of a park ranger. Please help us avoid the spread of these algae as it is a declared pest!



### Sailing

Only under conditions established in special permits that must be processed in the Administrative Headquarters of Torres del Paine National Park. In addition, all boats (kayak, inflatable boats, etc.) and associated equipment that enter the park must present a disinfection certificate issued by independent companies operating in Puerto Natales. This document will be valid for 48 hours and will be retained at the entrances.



### Operation of drones or radio-controlled devices

Its use is prohibited because they disturb the fauna. If you are caught using one, you will be expelled from the park and a report will be issued to the General Directorate of Civil Aviation.



### No Smoking

All the forest fires that have affected the park have been caused by human negligence. Thank you for NOT SMOKING.



### Climbing

Only under conditions established in special permits that must be processed in the Administrative Headquarters of Torres del Paine National Park.



### Swimming

Due to the high risk of asphyxiation by immersion, it is prohibited in all water bodies of the park: lakes, lagoons and rivers.



### Filming

As in all units of the National System of Wild Protected Areas of the State (SNASPE), the park is available for the capture of images (video, film, photographs). Excluded from formal processing and authorization are those whose purpose is for domestic use, press activities (graphics and television) **those involving assembly, major logistics deployment and/or projects for profit, advertising or commercial purposes, will be subject to charges and prior authorization processing.**



### Pets

Pets are not allowed, since in addition to disturbing wildlife, they can transmit and spread diseases. In turn, pets can also contract diseases of wildlife.

**Consult park rangers before doing any activity that is not described in this booklet.**

## IMPORTANT INFORMATION



**Garbage:** You must take all the garbage generated during your visit. Leaving garbage in the park is sanctioned by law 21,123. Do not risk fines.



**Mice:** You may find small mice in camps or camping areas. Although to date there is no evidence that they carry dangerous diseases such as the Hanta virus, we recommend that you always keep your tent tightly closed and store your food in hermetic containers keeping it hanging to avoid gnawing of your equipment or food. All the species present in the park are native and, therefore, protected since they play an important role in the balance of the ecosystem.



**Cell Phone Coverage:** There is no cell phone signal inside the park. In case of emergency, contact a park ranger, guide or tour operator with radio equipment (frequency 143,800 Mhz). If you have a satellite phone, you can call the Administrative Headquarters of the park +56612360496 or Carabineros de Chile + 56612761139.

## Driving Precautions

Traffic accidents are always a possibility in the Torres del Paine National Park and, in many cases, can be fatal if they happen in remote places where immediate help is not available. For this reason, they are avoidable if you drive with caution and maintaining an attitude of care in the various roads of the sector.

**60** Respect the speed limit established by the authority. Otherwise, you run the risk of losing control of the vehicle or run over the wildlife that moves freely through the sector.

Remain on the right side of the road to avoid frontal crashes in curves.

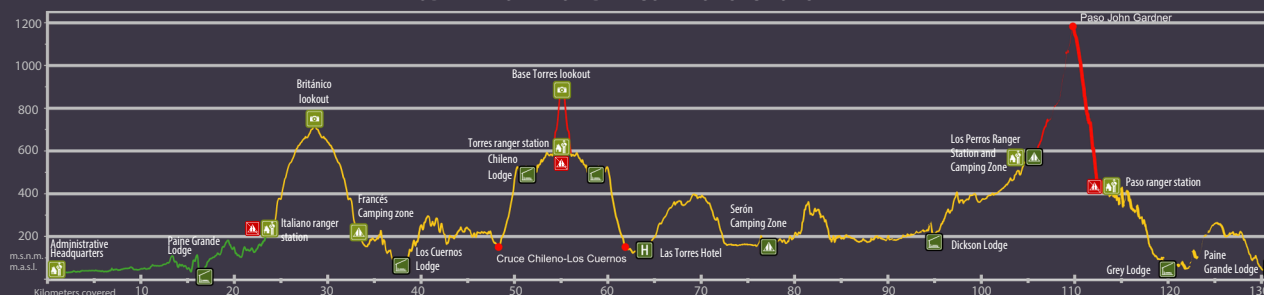
Stay alert to road conditions and weather. The wind, loose gravel, snow and frost are factors that can cause accidents with fatal results.

Park only in authorized parking lots. If you park in curves you can cause accidents; the best places to get optimal views of the landscape are the established viewpoints, duly signaled and marked on this map.

In days of intense wind, avoid getting on the vehicle, since, especially in children and older adults, there is a high risk of falls. If you do need to get on, be careful when opening the doors.

Consider that there is no fuel/gasoline supply in the Torres del Paine National Park. The nearest service station is in Puerto Natales. Save ¼ fuel to return without problems.

## ALTITUDINAL ZONATION DIFFICULTY OF SECTIONS



## SAFETY TIPS FOR HIKERS

• Water can be consumed from the park's water courses. Always collect it upstream of the trails and as far as possible from the camps.

• The schedules established for the closing of the trails aim at preventing the night from surprising the visitors before reaching the next camp. Only the park ranger of each sector can authorize walking after hours and for exceptional situations.

• In case of heavy rains or thaws, the rivers grow and can be dangerous, both because of their torrent and because of their low temperatures. Do not attempt to cross if the water exceeds the height of your knees and avoid walking alone. Always consult the park ranger about the condition of the trails.

• **Leaving the hiking trails is very dangerous.** Almost all fatal accidents in the park occur outside of authorized routes.

• **The climate in Patagonia changes rapidly.** Wear layers of appropriate clothing to withstand rain, wind and/or snow. Overestimating your abilities or underestimating nature can be dangerous.

• **Registration is mandatory upon arrival at all ranger stations.** In the Paso and Perros camps, in addition, you must register your exit for your own safety.

Escanea el código QR  
O ingresa en la web  
[www.pasesparques.cl](http://www.pasesparques.cl)  
y adquiere tu pase  
con anticipación a tu visita.



pases  
parques  
nacionales

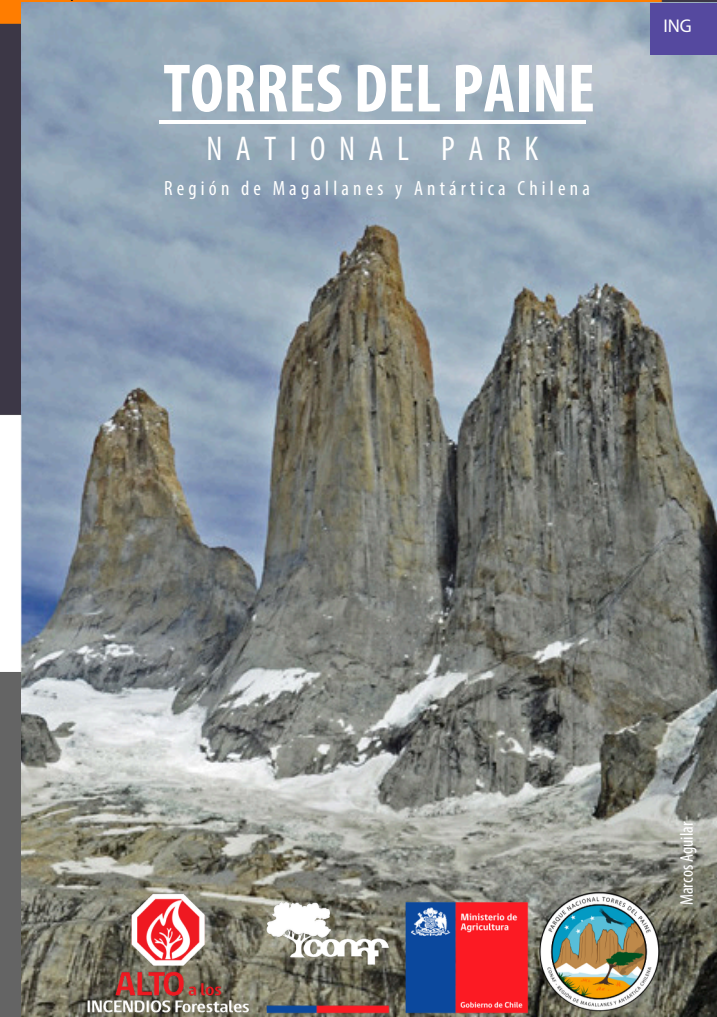
[parquetorresdelpaine.cl](http://parquetorresdelpaine.cl)



CONAF-Parque Nacional Torres del Paine



@conafpaine



# TORRES DEL PAINE

## NATIONAL PARK

Región de Magallanes y Antártica Chilena



ALTO a los  
INCENDIOS Forestales



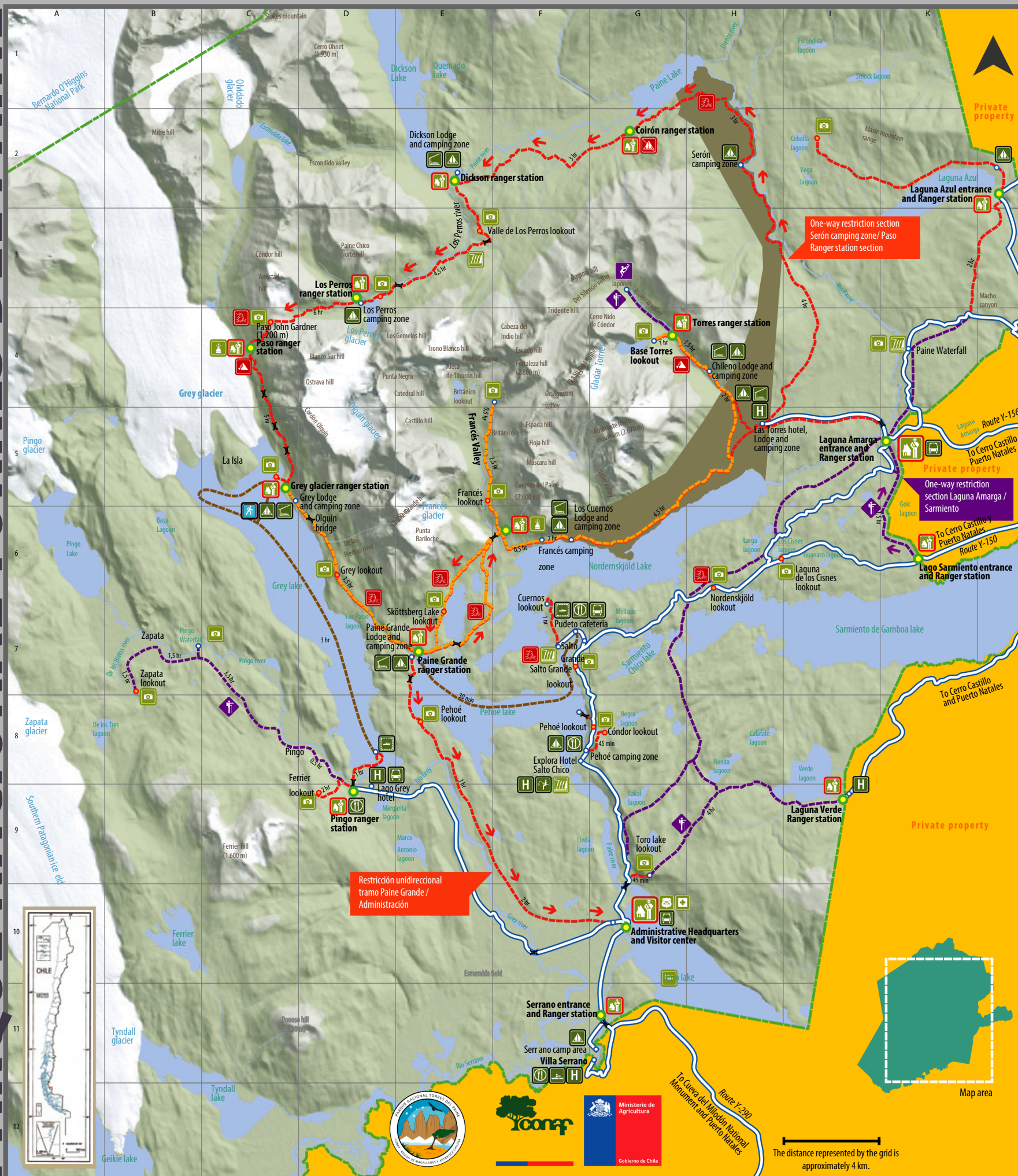
Ministerio de  
Agricultura



Gobierno de Chile

Marcelo Aguilera

# PARQUE NACIONAL TORRES DEL PAINE



Map for use as a reference for tourism only and has no cartographic properties. Under no circumstance does this map attempt to define borders or territorial limits.

2022 - 2024 SEASON

## SYMBOLY

### FREE SERVICES

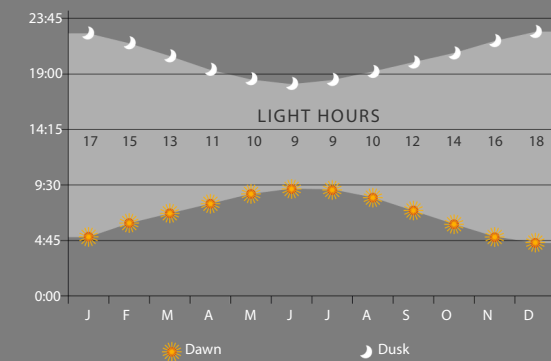
- Park Ranger
- Authorized used of small cookers
- Lookout
- Sport shing
- Spring or Waterfall
- Camping zone
- Police
- First aid

### PAID SERVICES

- Camping zone
- Hotel
- Lodge
- River Sailing
- Horseback riding
- Passenger sailing
- Regular buses
- Coffee shop or restaurant

- National Park boundary
- Walking trails
- Horseback riding trails
- Guided trail or restricted use
- Climbers only
- Not camping
- Land slides
- Strong winds
- Walk on ice
- Guided trail or restricted use

## LIGHT HOURS



## TRAIL CLOSURE TIMES

Trail Section	Km	Hours*	Summer**	Winter
Administrative Headquarters - Paine Grande Lodge	17	5.0	10:00	10:00
Paine Grande Lodge - Italiano ranger station	7.5	2.5	14:30	14:00
Italiano ranger station - Británico lookout	5.4	3.0	16:00	14:00
Italiano ranger station - Francés camping zone	2	0.5	14:00	17:00
Italiano ranger station - Los Cuernos Lodge	5	2.5	16:00	16:00
Los Cuernos Lodge - Las Torres Hotel	11,6	4,5	***	***
Las Torres Hotel - Chileno Lodge	5	2,0	***	***
Chileno Lodge - Torres ranger station	3	1,5		
Torres ranger station - Base Torres lookout	1,4	1	14:00	11:00
Base Torres lookout CLOSURE TIME			16:00	14:00
Las Torres Hotel - Serón camping zone			***	***
Serón camping zone - Dickson Lodge	13	4,6	***	***
Dickson Lodge - Los Perros camping zone	18	4,5	12:00	10:00
Los Perros camping zone - Paso ranger station	11,8	6,5	14:00	12:00
Paso ranger station - Grey Lodge	8	7	09:00	09:00
Grey Lodge - Paine Grande Lodge	11		15:00	11:00
		3,5	16:00	12:00

\* Reference only; the required time to complete the trail section may vary.  
 \*\* Reference times. Applies during summer, and both ways. Park rangers may restrict passage based on weather conditions.  
 • During summer, trails are open between 6 am until their closing time. During winter, trails are open between 8:30 am until their closing time.  
 \*\*\* These trails are on private property. Inquire closing times directly with them.

Authorized by resolution number 124, October 29, 2015, of the National Direction of Frontiers and Limits of the State.  
 The edition or distribution of maps, geographic charts and other prints or documents that relate or refer with the limits or frontiers of Chile, do not compromise in any way the State of Chile in accordance with the second article, letter g of the DFL N 83 of 1979 of the Ministry of Foreign Affairs.